

CERTIFICATE OF LOCATION OF GOVERNMENT CORNER

W 1/4 Corner of Section 20, Township 105, Range 42, 5th P.M.

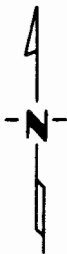
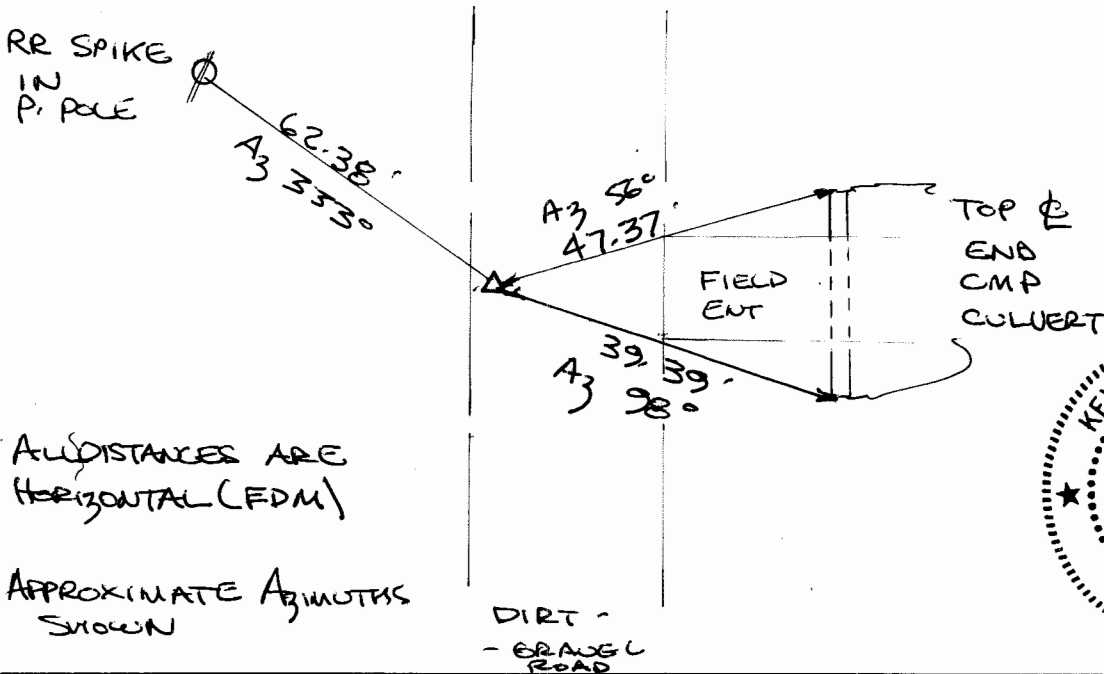
STATE OF MINNESOTA, County of MURRAY

At the corner location shown on the sketch:

- On _____ found a _____
DATE
- left monument as found, lowered monument, removed monument (explain)
- On 11-2-92 placed a 1/2" x 36" REBAR (6" BELOW GRAVEL SURFACE)
DATE

SKETCH OF REFERENCE TIES

- Dug Found Nothing
 - Set By Using Single Proportionate Method Between Found
 NW cor ! SW cor

ALL DISTANCES ARE HORIZONTAL (EDM)

APPROXIMATE AZIMUTHS SHOWN



Statement of evidence relative to this corner location is on back of page.

I hereby certify that this document and the data contained herein was prepared by me or under my direct supervision.

Kevin D. Jongerius 12-8-92
 SIGNATURE DATE
 Kevin D. Jongerius
 Registration No. 17518
 Land Surveyor, Professional Engineer
 County Surveyor, County Engineer

OFFICE OF THE COUNTY RECORDER

County of MURRAY
 I hereby certify that this document was filed in the Co. Recorders office at _____ .M. on the _____ day of JAN 14 1993 A.D., 19____
 County Recorder Janev Johnson
 By _____, Deputy
 DOCUMENT NO. _____